



Central Bank of Kenya

# Weekly Bulletin

November 29, 2024



## RECENT MONETARY AND FINANCIAL DEVELOPMENTS

### Exchange Rates

The Kenya Shilling remained stable against major international and regional currencies during the week ending November 28. It exchanged at KSh 129.64 per US dollar on November 28, compared to KSh 129.52 per US dollar on November 21 (**Table 1**).

### Foreign Exchange Reserves

The usable foreign exchange reserves remained adequate at USD 9,007 million (4.6 months of import cover) as of November 28. This meets the CBK's statutory requirement to endeavour to maintain at least 4 months of import cover (**Table 2**).

### Money Market

Liquidity in the money market remained adequate during the week ending November 28 supported by open market operations. Commercial banks' excess reserves stood at KSh 44.8 billion in relation to the 4.25 percent cash reserves requirement (CRR). The average interbank rate was at 11.93 percent on November 28 compared to 11.87 percent on November 21. During the week, the average number of interbank deals decreased to 37 from 39 in the previous week, while the average value traded decreased to KSh 23.1 billion from KSh 29.2 billion (**Table 3**).

### Government Securities Market

The Treasury bill auction of November 28 received bids totalling KSh 50.7 billion against an advertised amount of KSh 24.0 billion, representing a performance of 211.1 percent. Interest rate on the 91-day, 182-day, and 364-day Treasury bills declined (**Table 4**).

### Equity Market

At the Nairobi Securities Exchange, the NASI, NSE 25, NSE 20 share price index decreased by 1.8 percent, 1.6 percent and 0.3 percent, respectively during the week ending November 28. Equity turnover and total shares traded increased by 118.1 percent, and 58.2 percent respectively, while Market capitalization decreased by 1.8 percent, respectively (**Table 6**).

### Bond Market

Bond turnover in the domestic secondary market decreased by 4.4 percent during the week ending November 28 (**Table 6**). In the international market, yields on Kenya's Eurobonds on average decreased by 27.27 basis points. The yield on the 10- year Eurobond for Angola also increased (**Chart 2**).

### Global Trends

Concerns on inflation in advanced economies moderated during the week ending November 28, 2024. Germany's headline inflation remained unchanged at 2.4 percent in October and November, while core inflation edged up slightly to 3.0 percent from 2.9 percent. The US dollar index weakened by 0.78 percent against a basket of major currencies during the week ending November 28, 2024.

International oil prices decreased during the week ending November 28, partly reflecting easing of concerns over Middle East tensions. Major oil exporters OPEC+ countries rescheduled their policy meeting to December 5 where oil market investors expect further extension of oil production cuts. The price of Murban oil declined to USD 72.75 on November 28, 2024, from USD 75.56 on November 21.

**Table 1: Kenya Shilling Exchange Rates**

	USD	Sterling Pound	Euro	100 Japanese Yen	Uganda Shilling*	Tanzania Shilling*	Rwandese Franc*	Burundi Franc*
15-Nov-24	129.35	163.95	136.35	82.73	28.37	20.57	10.53	22.83
18-Nov-24	129.43	163.68	136.67	83.14	28.35	20.55	10.60	22.82
19-Nov-24	129.51	163.63	136.89	83.72	28.35	20.54	10.53	22.80
20-Nov-24	129.49	164.26	137.12	83.49	28.46	20.54	10.54	22.81
21-Nov-24	129.52	164.08	136.78	83.18	28.49	20.48	10.65	22.80
<b>Nov 15-21</b>	<b>129.46</b>	<b>163.92</b>	<b>136.76</b>	<b>83.25</b>	<b>28.41</b>	<b>20.54</b>	<b>10.57</b>	<b>22.81</b>
22-Nov-24	129.58	163.91	136.49	84.06	28.52	20.45	10.60	22.80
25-Nov-24	129.56	163.13	135.74	83.98	28.60	20.53	10.54	22.80
26-Nov-24	129.57	162.58	135.73	84.32	28.59	20.45	10.54	22.80
27-Nov-24	129.61	162.92	135.80	85.12	28.59	20.41	10.55	22.79
28-Nov-24	129.64	164.20	136.79	85.56	28.46	20.40	10.55	22.79
<b>Nov 22-28</b>	<b>129.59</b>	<b>163.35</b>	<b>136.11</b>	<b>84.61</b>	<b>28.55</b>	<b>20.45</b>	<b>10.56</b>	<b>22.80</b>

\*Units of currency per Kenya Shilling

Source: Central Bank of Kenya

**Table 2: Usable Foreign Exchange Reserves (USD Million)**

	31-Oct-24	7-Nov-24	14-Nov-24	21-Nov-24	28-Nov-24
1. CBK Usable Foreign Exchange Reserves (USD Million)*	8,586	9,323	9,276	9,144	9,007
2. CBK Usable Foreign Exchange Reserves (Months of Import Cover)**	4.4	4.8	4.8	4.7	4.6

\*Excludes encumbered reserves

\*\*Based on 36 months average of imports of goods and non-factor services

Source: Central Bank of Kenya

**Table 3: Money Market**

Date	Number of Deals	Value (KSh M)	Average Interbank Rate (%)
15-Nov-24	32	27,730.00	11.88
18-Nov-24	37	31,010.00	11.88
19-Nov-24	44	29,235.00	11.88
20-Nov-24	37	29,480.00	11.88
21-Nov-24	44	28,690.00	11.87
<b>Nov 15-21</b>	<b>39</b>	<b>29,229.00</b>	<b>11.88</b>
22-Nov-24	43	23,150.00	11.82
25-Nov-24	37	29,480.00	11.88
26-Nov-24	43	23,130.00	11.90
27-Nov-24	37	22,900.00	11.92
28-Nov-24	27	16,940.00	11.93
<b>Nov 22-28</b>	<b>37</b>	<b>23,120.00</b>	<b>11.89</b>

Source: Central Bank of Kenya

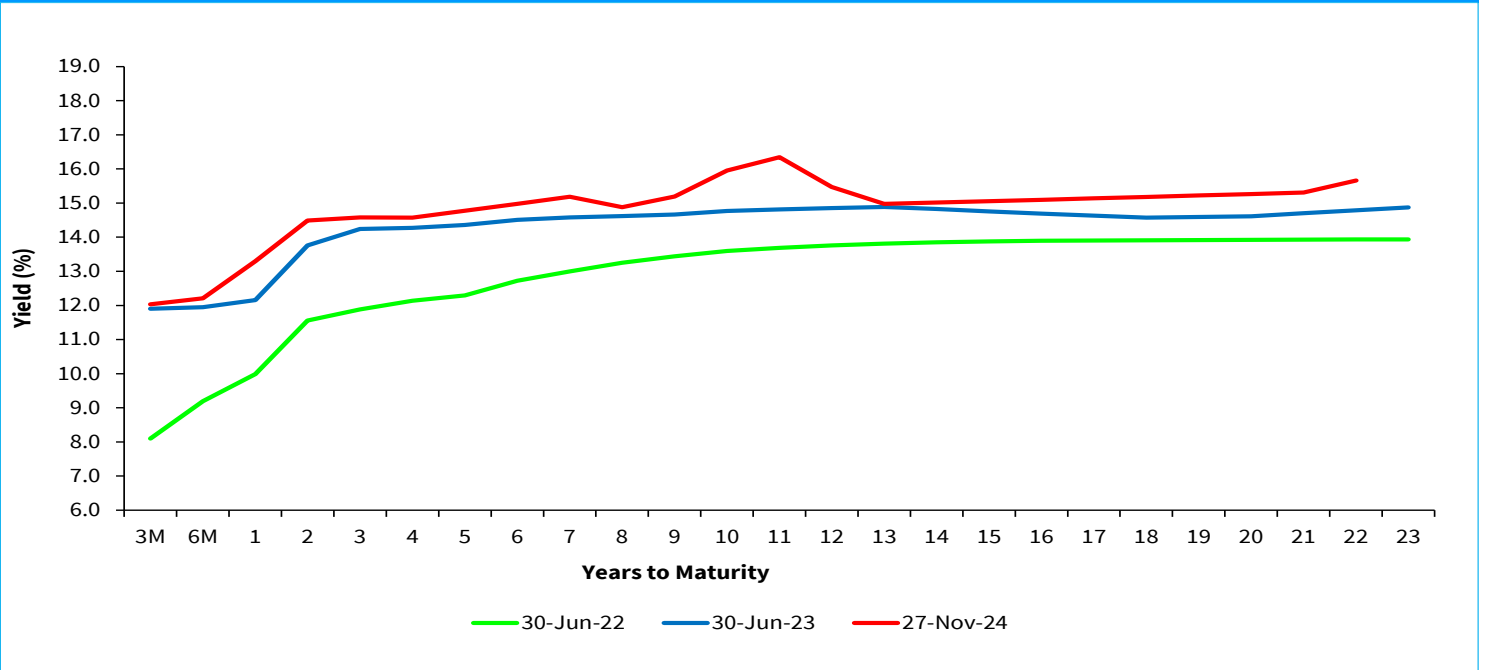
<b>Table 4: Performance of Treasury Bill Auctions</b>						
<b>91-Day Treasury Bills</b>						
<b>Date of Auction</b>	<b>27-Jun-24</b>	<b>29-Aug-24</b>	<b>26-Sep-24</b>	<b>31-Oct-24</b>	<b>21-Nov-24</b>	<b>28-Nov-24</b>
Amount Offered (KSh M)	4,000.00	4,000.00	4,000.00	4,000.00	4,000.00	4,000.00
Bids Received (KSh M)	4,361.03	17,496.40	6,919.23	15,007.98	24,933.80	18,817.44
Amount Accepted (KSh M)	2,745.34	16,953.43	3,370.90	7,366.03	13,069.92	15,938.75
Maturities (KSh M)	3,922.10	18,029.30	2,377.75	13,721.90	7,958.50	17,516.75
<b>Average Interest Rate (%)</b>	<b>15.977</b>	<b>15.784</b>	<b>15.718</b>	<b>13.966</b>	<b>12.034</b>	<b>11.250</b>
<b>182-Day Treasury Bills</b>						
<b>Date of Auction</b>	<b>27-Jun-24</b>	<b>29-Aug-24</b>	<b>26-Sep-24</b>	<b>31-Oct-24</b>	<b>21-Nov-24</b>	<b>28-Nov-24</b>
Amount Offered (KSh M)	10,000.00	10,000.00	10,000.00	10,000.00	10,000.00	10,000.00
Bids Received (KSh M)	1,494.42	4,451.13	5,437.90	23,241.04	17,140.68	10,416.04
Amount Accepted (KSh M)	1,479.67	4,443.43	3,330.51	5,783.01	12,486.14	4,208.53
Maturities (KSh M)	293.25	2,088.35	2,144.40	5,518.70	12,286.05	9,724.25
<b>Average Interest Rate (%)</b>	<b>16.764</b>	<b>16.633</b>	<b>16.589</b>	<b>14.523</b>	<b>12.210</b>	<b>11.338</b>
<b>364-Day Treasury Bills</b>						
<b>Date of Auction</b>	<b>27-Jun-24</b>	<b>29-Aug-24</b>	<b>26-Sep-24</b>	<b>31-Oct-24</b>	<b>21-Nov-24</b>	<b>28-Nov-24</b>
Amount Offered (KSh M)	10,000.00	10,000.00	10,000.00	10,000.00	10,000.00	10,000.00
Bids Received (KSh M)	1,833.64	2,254.39	8,567.15	23,917.48	35,161.76	21,422.50
Amount Accepted (KSh M)	1,828.51	2,248.06	5,764.78	14,990.38	20,817.87	14,507.31
Maturities (KSh M)	1,679.00	567.65	522.70	978.25	2,055.70	2,102.30
<b>Average Interest Rate (%)</b>	<b>16.791</b>	<b>16.842</b>	<b>16.800</b>	<b>14.968</b>	<b>13.295</b>	<b>12.490</b>

Source: Central Bank of Kenya

<b>Table 5: Performance of Treasury Bond Auctions</b>								
<b>Date of Auction</b>	<b>18-Sep-24</b>		<b>09-Oct-24</b>		<b>17-Oct-24</b>	<b>06-Nov-24</b>		<b>13-Nov-24</b>
	<b>RE-OPEN</b>		<b>RE-OPEN</b>		<b>TAP</b>	<b>RE-OPEN</b>		<b>RE-OPEN</b>
<b>Tenor</b>	<b>FXD1/ 2024/010</b>	<b>FXD1/ 2016/020</b>	<b>FXD1/ 2016/010</b>	<b>FXD1/ 2022/010</b>	<b>FXD1/ 2022/010</b>	<b>FXD1/ 2023/010</b>	<b>FXD1/ 2022/015</b>	<b>FXD1/ 2024/010</b>
Amount offered (KSh M)	30,000.00		30,000.00		15,000.00	25,000.00		20,000.00
Bids received (KSh M)	13,396.00	9,246.10	36,615.53	14,349.29	16,497.15	16,331.02	16,717.40	55,575.58
Amount Accepted (KSh M)	11,565.37	7,711.12	28,026.11	3,251.00	15,092.95	10,286.04	15,397.04	30,515.91
Maturities (KSh M)								
Average interest Rate (%)	16.87	17.29	16.98	16.95	16.95	15.97	16.30	15.86

Source: Central Bank of Kenya

**Chart 1: Government Securities Yield Curve**



Source: Nairobi Securities Exchange (NSE)

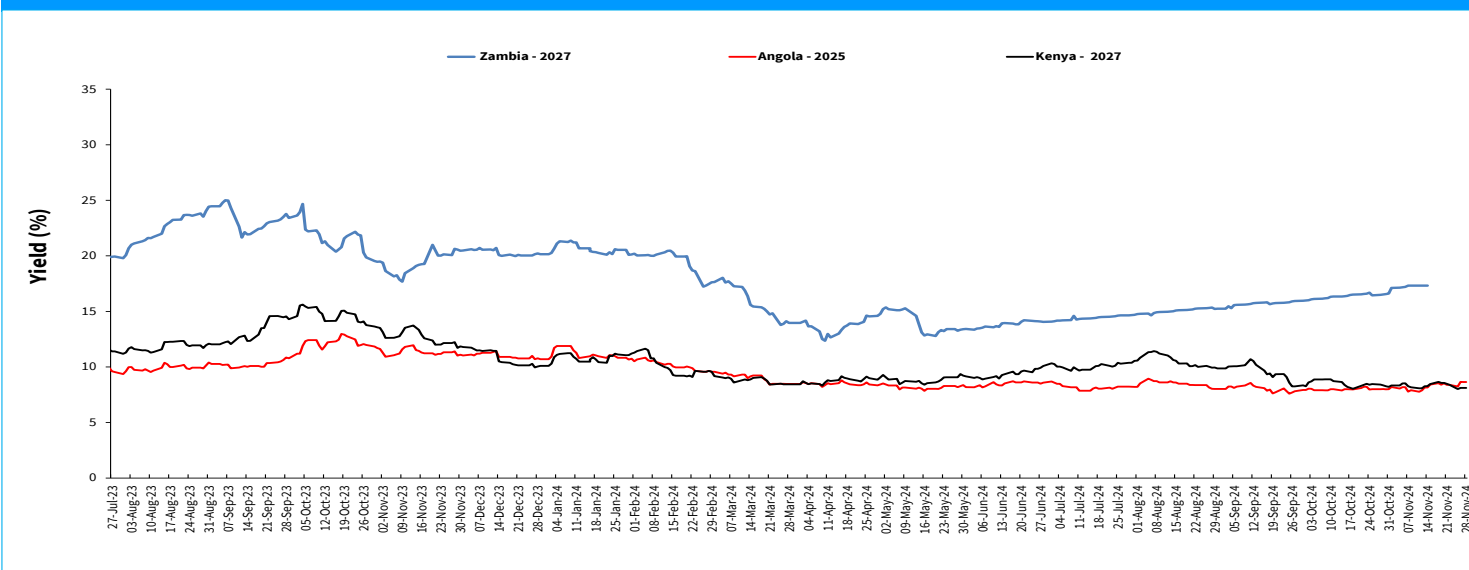
**Table 6: Performance of Key Market Indicators**

INDICATOR	NASI 100=2008	NSE 25 Share Index	NSE 20 Share Index 100=1996	Total Deals (Equity)	Total Shares Traded (Mil- lion)	Equity Turnover (KSh Million)	Market Capitaliza- tion (KSh Billion)	Bonds Turnover (KSh Million)	Eurobond Yields (%)					
									7-Year 2027	10-Year 2028	6-Year 2031	12-Year 2032	13-Year 2034	30-Year 2048
15-Nov-24	115.01	3195.31	1930.23	1,450	18	99	1,800	4099.4	8.465	9.227	10.184	10.115	10.024	10.333
18-Nov-24	114.16	3177.14	1921.89	1,416	30	223	1,787	1960.85	8.655	9.322	10.312	10.231	10.153	10.435
19-Nov-24	113.43	3159.60	1910.83	1,509	19	283	1,776	6410.9	8.564	9.23	10.248	10.145	10.077	10.35
20-Nov-24	112.71	3124.96	1909.93	1,552	20	282	1,764	10968.65	8.567	9.231	10.216	10.089	10.026	10.299
21-Nov-24	112.71	3113.49	1885.37	1,492	23	259	1,763	8050.05	8.481	9.095	10.121	10.062	9.978	10.266
<b>Nov 15-21</b>	<b>112.71</b>	<b>3113.49</b>	<b>1885.37</b>	<b>7,419.00</b>	<b>110.81</b>	<b>1,146.89</b>	<b>1,762.88</b>	<b>31,489.85</b>	<b>8.481</b>	<b>9.095</b>	<b>10.121</b>	<b>10.062</b>	<b>9.978</b>	<b>10.266</b>
22-Nov-24	112.74	3118.32	1891.18	1,413.00	23.0211	240.74	1764.867	4457.4	8.389	8.957	9.994	9.977	9.878	10.183
25-Nov-24	112.26	3094.61	1884.30	1,793.00	26.7959	351.40	1757.247	8678.5	8.015	8.727	9.868	9.780	9.753	10.085
26-Nov-24	111.38	3074.30	1885.31	1,563.00	30.7225	419.13	1743.538	7342.5	8.113	8.729	9.931	9.865	9.780	10.118
27-Nov-24	110.68	3063.59	1881.19	1,635.00	30.4306	472.37	1732.61	6076.5	8.118	8.686	9.869	9.810	9.782	10.102
28-Nov-24	110.65	3064.59	1879.72	1,383.00	64.3257	1017.21	1732.065	3561.7	8.118	8.686	9.869	9.810	9.782	10.102
<b>Nov 22-28</b>	<b>110.65</b>	<b>3064.59</b>	<b>1879.72</b>	<b>7,787.00</b>	<b>175.30</b>	<b>2,500.85</b>	<b>1,732.07</b>	<b>30,116.60</b>	<b>8.118</b>	<b>8.686</b>	<b>9.869</b>	<b>9.810</b>	<b>9.782</b>	<b>10.102</b>
<b>Weekly Changes (%)</b>	<b>-1.83</b>	<b>-1.57</b>	<b>-0.30</b>	<b>4.96</b>	<b>58.20</b>	<b>118.05</b>	<b>-1.75</b>	<b>-4.36</b>	<b>-0.363*</b>	<b>-0.409*</b>	<b>-0.252*</b>	<b>-0.252*</b>	<b>-0.196*</b>	<b>-0.164*</b>

\* Percentage points

Source: Nairobi Securities Exchange (NSE) and Thomson Reuters

## Chart 2: Yields on 10-Year Eurobonds for Selected Countries



Source: London Stock Exchange

## Table 7: Government Domestic Debt (KSh Billion)

	29-Dec-23	28-Jun-24	31-Jul-24	28-Aug-24	30-Sep-24	30-Oct-24	20-Nov-24	27-Nov-24
1. Treasury Bills (Excluding Repos)	546.90	615.89	651.89	673.95	712.45	760.13	807.04	834.73
<i>(As % of total securities)</i>	<b>11.35</b>	<b>11.75</b>	<b>12.32</b>	<b>12.47</b>	<b>12.96</b>	<b>13.66</b>	<b>14.29</b>	<b>14.71</b>
2. Treasury Bonds	4,271.82	4,627.12	4,637.89	4,729.22	4,785.63	4,802.76	4,840.35	4,840.35
<i>(As % of total securities)</i>	<b>88.65</b>	<b>88.25</b>	<b>87.68</b>	<b>87.53</b>	<b>87.04</b>	<b>86.34</b>	<b>85.71</b>	<b>85.29</b>
3. Total Securities (1+2)	4,818.72	5,243.01	5,289.78	5,403.17	5,498.08	5,562.89	5,647.39	5,675.08
4. Overdraft at Central Bank	94.13	61.02	60.53	49.43	0.00	28.63	51.29	51.82
5. Other Domestic debt*	137.26	106.25	103.06	103.07	103.64	103.69	102.09	102.09
<i>of which IMF funds on-lent to Government</i>	<b>104.24</b>	<b>83.54</b>	<b>82.61</b>	<b>82.61</b>	<b>82.63</b>	<b>82.63</b>	<b>81.08</b>	<b>81.08</b>
<b>6. Gross Domestic Debt (3+4+5)</b>	<b>5,050.11</b>	<b>5,410.28</b>	<b>5,453.37</b>	<b>5,555.66</b>	<b>5,601.71</b>	<b>5,695.22</b>	<b>5,800.77</b>	<b>5,828.99</b>

\* Other domestic debt includes clearing items in transit, advances from commercial banks and Pre-1997 Government Overdraft.

Source: Central Bank of Kenya

## Table 8: Composition of Government Domestic Debt by Instrument (Percent)

	29-Dec-23	28-Jun-24	31-Jul-24	28-Aug-24	30-Sep-24	30-Oct-24	20-Nov-24	27-Nov-24
Treasury bills (Excluding Repos)	10.83	11.38	11.95	12.13	12.72	13.35	13.91	14.32
Treasury bonds	84.59	85.52	85.05	85.12	85.43	84.33	83.44	83.04
Overdraft at Central Bank	1.86	1.13	1.11	0.89	0.00	0.50	0.88	0.89
Other domestic debt	2.72	1.96	1.89	1.86	1.85	1.82	1.76	1.75
<i>of which IMF fund on lent to government</i>	2.06	1.54	1.51	1.49	1.48	1.45	1.40	1.39
<b>TOTAL</b>	<b>100.00</b>	<b>100.00</b>	<b>100.00</b>	<b>100.00</b>	<b>100.00</b>	<b>100.00</b>	<b>100.00</b>	<b>100.00</b>

Source: Central Bank of Kenya

**Table 9: Government Domestic Debt by Holder (Percent)**

	29-Dec-23	28-Jun-24	31-Jul-24	28-Aug-24	30-Sep-24	30-Oct-24	20-Nov-24	27-Nov-24
Banking Institutions	46.07	45.12	45.12	44.81	44.38	45.09	45.50	45.55
Insurance Companies	7.23	7.23	7.21	7.20	7.22	7.20	7.15	7.12
Parastatals	5.47	5.13	5.08	5.34	5.35	5.45	5.49	5.41
Pension Funds*	29.93	29.60	29.39	29.14	29.44	29.16	28.97	28.84
Other Investors	11.30	12.92	13.19	13.50	13.60	13.11	12.89	13.09
<b>Total</b>	<b>100.00</b>	<b>100.00</b>	<b>100.00</b>	<b>100.00</b>	<b>100.00</b>	<b>100.00</b>	<b>100.00</b>	<b>100.00</b>

\* Includes pension funds and custodial/ Nominee Accounts

Source: Central Bank of Kenya

**Table 10: Public Debt**

	Dec-21	Jun-22	Dec-22	Jun-23	Sep-23	Dec-23	Mar-24	May-24	Jun-24	Sep-24*
Domestic debt (KSh Bn)	4,032.37	4,288.33	4,472.84	4,832.11	4,917.47	5,050.11	5,235.19	5,319.89	5,410.28	5,601.71
Public & Publicly Guaranteed External debt (USD Bn)	36.90	36.58	37.88	38.76	38.27	38.92	39.18	39.30	39.77	40.16
Public & Publicly Guaranteed External debt (KSh Bn)	4,174.37	4,290.73	4,673.14	5,446.56	5,667.80	6,089.58	5,163.42	5,118.31	5,150.84	5,188.37
<b>Public debt (KSh Bn)</b>	<b>8,206.74</b>	<b>8,579.06</b>	<b>9,145.98</b>	<b>10,278.67</b>	<b>10,585.27</b>	<b>11,139.69</b>	<b>10,398.61</b>	<b>10,438.19</b>	<b>10,561.12</b>	<b>10,790.08</b>

\* Provisional

Source: The National Treasury and Central Bank of Kenya